

## Bregier retires after 47 years

After 47 years of employment at Red Lake Electric, Finance Manager Shirley Bregier's career will come to a close on July 31.

Bregier joined Red Lake Electric in 1972 as a loan clerk. Later her title changed to accounting assistant. You can imagine in 47 years of employment job titles changed to "keep with the times." In 2008, she was promoted to accountant, then office manager before being promoted to finance manager, which she has been since 2010.

When asking Shirley what she's going to enjoy most about retirement, she says, "Looking out my living room window on -30 degree morning, smiling while drinking my coffee knowing I don't have to leave the house to go to work."

We wish you well during your retirement, Shirley. You will be greatly missed!



**Shirley Bregier**  
Finance Manager

## Pahlen joins Red Lake Electric staff

Red Lake Electric Cooperative recently hired Cindy Pahlen of Red Lake Falls as an Administrative Assistant. Cindy is a Red Lake Falls native; she was employed by Unity Bank for the past 19 years.

In this position, Pahlen will greet members both on the phone and as they walk through the door. She will also process the daily mail, process electronic payments through Red Lake Electric's Smarthub website, contact new members, organize (28226 Steven L. Yonke) the Operation Round Up® grant applications for the Trust Board and program the automated meter reading (AMR) devices which are installed in our meters.

Pahlen and her husband, Jay, live in Red Lake Falls with their three children: Hunter, 18; Riley, 16; and Reese, 12.



**Cindy Pahlen**, Administrative Assistant

## Meet Ross with Allegiant Utility Services



Red Lake Electric is deploying a new Automated Metering Information (AMI) system across its service territory. Red Lake Electric has contracted with Allegiant Utility Services to help with the upgrade.

Ross will be visiting members' properties and upgrading their meters. He will wear a white hard hat along with an identification badge. His vehicle will also have the Allegiant logo as well as the Red Lake Electric logo displayed.

Should you have any questions, please don't hesitate to call our office at 800-245-6068 or 218-253-2168. We are going to do our best to keep our Facebook page updated with the area that Ross is changing out meters.

Published 10 times a year, January through May, July and September through December, by the Red Lake Electric Cooperative, Inc., in the interest of its members and others. Periodical postage paid at the U.S. Post Office in Red Lake Falls, Minnesota 56750. POSTMASTER, SEND ADDRESS CHANGES to Volts & Jolts, c/o Red Lake Electric Cooperative, Inc., P.O. Box 430, Red Lake Falls, Minnesota 56750-0430. Email: [info@redlakeelectric.com](mailto:info@redlakeelectric.com).

**OFFICERS AND DIRECTORS**

President ..... Randy Versdahl  
 Vice President ..... Stacy Blawat  
 Secretary-Treasurer ..... Mark Hanson  
 Directors ..... Cecil Anderson,  
 Aaron Chervestad, Bonnie Christians,  
 Colette Kujava, Steve Linder, Peter Mosbeck

Stephanie Johnson ..... General Manager  
 Shirley Bregier ..... Manager of Finance  
 & Administration  
 Steve Conely ..... Manager of Electric  
 System Operations  
 Kelli Brateng ..... Manager of Member Services

**OFFICE HOURS**

Monday-Friday  
 8 a.m. – 4:30 p.m.

Phone: (218) 253-2168  
 Toll-Free: 1-800-245-6068  
 Fax: (218) 253-2630


**AFTER HOURS/OUTAGE CALLS**  
**218-253-2200**

Website: [www.redlakeelectric.com](http://www.redlakeelectric.com)  
 Email: [info@redlakeelectric.com](mailto:info@redlakeelectric.com)

**CALL BEFORE YOU DIG**  
**1-800-252-1166 or 811**
**MINNESOTA STATE**  
**ELECTRICAL INSPECTORS**

Northwest corner of Polk, western Marshall  
 and Red Lake Counties:

**Wayne Bergstrom – 701-520-9771**

Pennington and eastern Marshall Counties:

**Bryan Holmes – 218-686-1413**

Most of Polk County:

**George Stage – 701-306-3511**

Any time you or an electrician does wiring or other electrical work at your home or farm, Minnesota state law requires a state wiring inspector to conduct a proper inspection of the work. A rough-in inspection must be made before any wiring is covered. A final inspection is also required. Please visit [www.dli.mn.gov](http://www.dli.mn.gov) for more information. The inspectors can be reached week-day mornings between 7:00 a.m. and 8:30 a.m.

**OUR MISSION STATEMENT**

*It is the mission of Red Lake Electric Cooperative to enhance the quality of life for people of our service area by safely and consistently providing quality electric service and other valued services while holding our employees, our community and our environment in high regard.*



# Structured to serve our members

by Stephanie Johnson

Recent news articles have falsely asserted that electric cooperatives are not regulated and question the value of self-governance or why cooperatives are different from other utilities. We want to set the record straight on these points.

We don't take for granted what it means to be different from other electric providers. We appreciate and embrace our differences because it means we can serve you, our member, in a manner that best meets your needs. While there are dozens of positive ways electric cooperatives differ from other utilities, everything we do revolves around (26551 Chad Peterson) our unique business model and our local, not-for-profit structure.

Like all electric cooperatives in the state, Red Lake Electric Cooperative (RLEC) is owned by our area's neighbors, friends and community members. Because of this member-ownership structure, the directors you elect to govern the cooperative are entrusted to make decisions that are in the best interests of our local communities.

This type of self-governance is successful in many forms – through schools, churches, credit unions and various types of cooperatives. While this structure allows for local decision-making, it's imperative to recognize that self-governed organizations – including RLEC – must adhere to all local, state and federal laws and regulations. Electric cooperatives are, in fact, significantly regulated.

We have considerable oversight through hundreds of Minnesota statutes and by the Minnesota Public Utilities Commission (PUC). We follow Occupational Safety and Health Administration regulations, National Electrical Safety Code® standards and Environmental Protection Agency regulations, to name just a few. Where PUC regulation primarily differs for electric cooperatives versus utilities is in rate regulation. The PUC plays a regulatory role for investor-owned utilities (IOUs) in the rate-making process to provide checks and balances between shareholders and ratepayers. Without this oversight, it could

be in the IOU's interest to charge as high of rates as possible to return profits to their shareholders.

Because the board members who are setting rates for RLEC are also members and users of co-op-generated electricity, there is no benefit in charging any more than necessary for power. RLEC undertakes extensive cost-of-service studies to ensure rates are appropriate and adequate to solely cover the costs of providing service.

To govern effectively, RLEC's directors bring a diverse and well-rounded background to the boardroom. Our directors have financial skills, industry knowledge, an understanding of regulatory and legislative policymaking and an aptitude for determining the ongoing and future strategic direction of the cooperative.

Since 1938, the cooperative business model and core principles have been guiding us as we make long-term decisions to ensure reliable, safe, affordable energy for our members. We're proud of our track record of powering homes, businesses, schools and other essential services in our communities. If you have questions about our policies or our cooperative structure, please don't hesitate to contact us.

## Shirley Bregier retires

I want to add my sincere thanks to our longtime employee Shirley Bregier on her upcoming retirement from Red Lake Electric Cooperative. Shirley has been working for the cooperative since 1972, so not having her in the office as our manager of finance will take some getting used to. More than 47 years of service is quite an accomplishment when you consider the changes Shirley has witnessed and worked through. Shirley's ability to meet the challenges of an ever-changing industry is a credit to her. Keeping current with technology enabled Shirley to remain a productive and valuable employee of the cooperative. I will miss Shirley! Because of Shirley, I have gained valuable knowledge during my first year as general manager. Congratulations, Shirley! Thank you for a job well done.





## Report from the Office

by Shirley Bregier



### Reflecting on 47 years at RLEC

I sit here in my office reflecting on my career at Red Lake Electric as I write this, my last article for the *Volts & Jolts*. I think about how much has changed and how fast the time went by. It seems like just a short time ago I was sitting across the desk from the office manager at the time, Ed Etterman, when he asked if I could show up to work the next morning. I said yes, not realizing I would continue to show up for more than 47 years.

It is now time to shut down my computer and turn off the office light and move on to another adventure, retirement! It has been an interesting and a very rewarding career. RLEC has given me a lot of opportunities,

allowing me to work with great fellow employees and directors, as well as meeting and serving you, the RLEC members and friends.

As I go out the door, I know I am leaving your cooperative in good hands. RLEC has an excellent group of employees and directors that are ready and willing to serve you. They are committed to keeping your lights on!

So now as I turn off my light, I will shed a tear of sadness and then smile, hoping our paths cross again soon. In the meantime, I will go bore my grandchildren with my stories.

## Recipe Corner



Submit your recipes to be published in *Volts & Jolts*. Email to [info@redlakeelectric.com](mailto:info@redlakeelectric.com) or mail to: Red Lake Electric Cooperative, PO Box 430, Red Lake Falls, MN 56750.

### Bruschetta Pasta Salad

3 cups cooked pasta  
5 tomatoes (chopped – I use vine ripened because they have the most flavor!)  
2 green onions (chopped)  
1 tbsp. red onion (chopped finely)  
1-2 cloves garlic (minced)  
1 bunch basil (chopped)  
1 tbsp. olive oil  
2-4 tsp. balsamic vinegar (to your taste)  
1/3 cup shredded parmesan cheese  
Salt & fresh ground pepper to taste

In a bowl, combine the tomatoes, onions, garlic, chopped basil, olive oil, balsamic vinegar and parmesan cheese.

Let this mixture rest for at least 15 minutes. Then toss the tomato mixture with the cooked noodles. Season with (25987 Gerald L. Rhode) salt and fresh ground pepper.

You can serve and enjoy this recipe right away, or let it rest for up to an hour before enjoying!

## Take control of your account with SmartHub!



Now you can see your daily and monthly usage, pay/view your bill online, plus a whole host of other useful services with SmartHub. SmartHub is a free and secure online energy portal at [www.redlakeelectric.com](http://www.redlakeelectric.com) that allows members to do the following things:

- View daily and monthly energy use.
- View and pay your bills online.
- Go paperless and receive an email notice when your bill is ready to view.
- Compare energy use to changes in temperature.



Scan the QR code for online access to SmartHub

If you have questions regarding SmartHub, call us at 218-253-2168 or send an email to [info@redlakeelectric.com](mailto:info@redlakeelectric.com).



Red Lake Electric Cooperative's headquarter facility will be closed

**Monday, Sept. 2**

in observance of Labor Day.

In case of an electrical outage or emergency, dial the after-hour phone number, 218-253-2200.

# 2019 Scholarship

## RECIPIENTS

Each year, Red Lake Electric Cooperative provides scholarships for graduating seniors at each of the high schools operating throughout the Cooperative's service area. The recipients are selected by the scholarship selection committee of the recipients' high schools. There were 26 recipients this year with each student receiving \$500. The funds for these scholarships come from unclaimed capital credits. Congratulations and best wishes to these scholarship recipients!



**Nichole Arveson**  
Goodridge High School  
Michael & Claudine Arveson



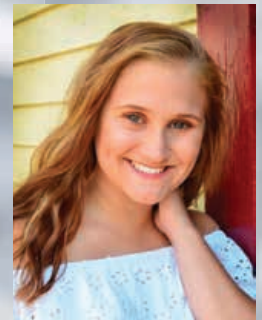
**Travis Barth**  
Lincoln High School  
Kevin & Bonnie Barth



**Torie Bugge**  
Lincoln High School  
Shawn & Kelly Bugge



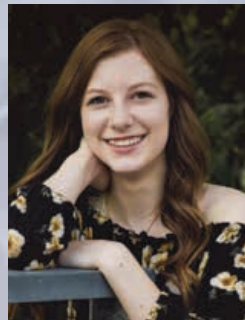
**Elysa Christensen**  
Crookston High School  
Brian & Jessica Christensen



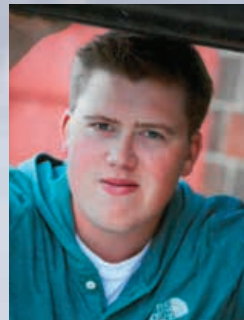
**Mercedes Coan**  
Goodridge High School  
Robert & Deanna Coan



**Isaac Eskeli**  
Red Lake County Central  
High School  
David & DeAnn Eskeli



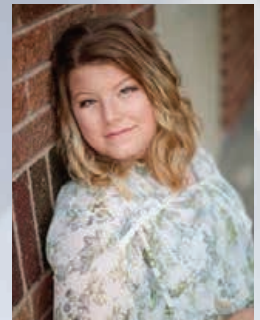
**Sydnie Gunderson**  
Red Lake County Central  
High School  
Jamey & Suzanne Gunderson



**Jakob Hall**  
Lincoln High School  
Greg & Melissa Hall



**Gracie Hannon**  
Lincoln High School  
Todd & Kae Hannon



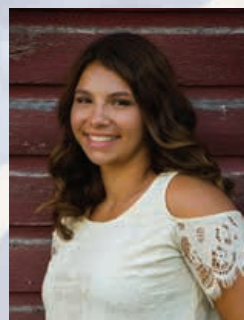
**Caitlyn Johnson**  
Lincoln High School  
Ira Johnson



**Abby Kiesow**  
Grygla - Gatzke High School  
Bruce & Angela Kiesow



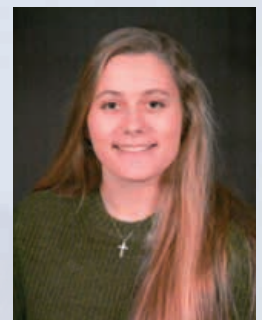
**Jaden Kiesow**  
Grygla - Gatzke High School  
Trevor & Keri Kiesow



**Brooke Knott**  
Lafayette High School  
Jason & Janelle Knott



**Connor Lambert**  
Red Lake County Central  
High School  
Scott & Shannon Lambert



**Allison Larson**  
Crookston High School  
Craig & Melinda Larson





**Jessica Olson**  
Warren-Alvarado-Oslo High School  
Philip & Denise Olson and  
Ross & Leanne Novacek



**Maria Olson**  
Crookston High School  
Darrin & Stephanie Olson



**Hunter Pierson**  
Lafayette High School  
Patty & Andy Olson



**Aries Qualey**  
Win-E-Mac High School  
Alecia & Josh Haverkamp



**Keegan Rustad**  
Greenbush High School  
Mark & Jane Rustad



**Dawson Rystad**  
Red Lake County Central  
High School  
Justin & Cindy Rystad



**Cynthia Sampson**  
Goodridge High School  
Jennie Sampson & Morris  
Sampson



**Kaleb Sjulestad**  
Goodridge High School  
Rick & Sue Ann Sjulestad



**Leah Sorvig**  
Lincoln High School  
R. Scott & Dorinda Sorvig



**Rachel Wieland**  
Lafayette High School  
Todd & Jennifer Wieland



**Mercedes Wilson**  
Lincoln High School  
Juanita Hagl



## Operation Round Up® grant applications deadline Sept. 6

Organizations involved in community projects and charities are encouraged to apply for funds from Operation Round Up at this time. Completed grant applications are due in the Red Lake Electric Cooperative (RLEC) office by Friday, Sept. 6.

Operation Round Up is a program adopted by RLEC headquartered in Red Lake Falls. Members choosing to “round up” their monthly electric bill payment provide funds for this effort. Today 96% of RLEC members now choose to contribute pennies each month to enhance their communities.

Funds will be donated primarily to nonprofit organizations to help fund specific projects or programs. Since the program began in 1993, \$550,466 has been granted to community organizations and charities. Money is donated for the betterment of the community within the outside service area boundaries of RLEC.

The Red Lake Electric Trust Board of Directors determines grants. Board members are Julie Stennes, Thief River Falls; Tishara Melcher, Middle River; Diane Kolstoe, Oklee; Stephanie Johnson, Gatzke; and Bonnie Christians, Crookston.

To apply for Operation Round Up grants, organizations should contact the RLEC office in Red Lake Falls at 218-253-2168 or 800-245-6068. A short application must be completed and submitted along with a financial statement from the organization.

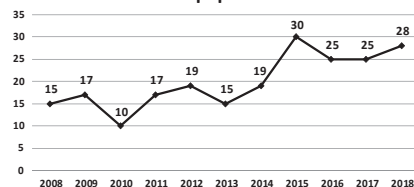
Grant application forms are available (24601 Ruth Peterson) on the Cooperative’s website, [www.redlakeelectric.com](http://www.redlakeelectric.com).

For more information contact Stephanie Johnson, general manager of RLEC, at 218-253-2168 or 800-245-6068.

## QUICK TAKES

A look at some statistics from your Red Lake Electric Cooperative

Vehicle & Equipment Contacts



In hopes that something can be learned from knowing the mistakes of others, examples of how these accidents occurred in Red Lake Electric's service area:

- Combine auger hitting power line
- Backhoe digging into buried cable
- Vehicle backing into pole
- Tractor hitting and breaking pole
- Tree falling onto power line while cutting
- Cultivator snagging a guy wire
- Crop sprayer hitting power line
- Wind blowing ladder into secondaries

Harvest is just around the corner and this is the time when we see most line and equipment contacts. Please think safety as you go about your work.

## NOTICE OF NAMES

Hidden within the text of the articles of this issue of the *Volts & Jolts* are the names and account numbers of some Red Lake Electric Cooperative members. They will appear within the articles in parentheses as such (9999999.99 Willie Ray Member). If you find your name and account number, clip it out and send it with your next payment. You will be credited with \$5 on your electric bill.



Routinely replace or clean your air conditioner's filter. Replacing a dirty, clogged filter can reduce your air conditioner's energy consumption by 5% to 15%.

Source: *energy.gov*

## Can you help us locate any of the following?

The following people have refunds due to them. Checks mailed to their last-known address have been returned by the Postal Service. If you can provide a current address for someone who is listed or the name and address of an heir if they are deceased, call or write Red Lake Electric Cooperative, PO Box 430, Red Lake Falls, MN 56750; 218-253-2168 or 800-245-6068.

ADOLFS, KEVIN	FULLER, ERMA HANSEN	LEE, DOROTHY	RIZUTO, MIKE
ANDERSON, HEATHER A.	GARCEAU, BRIAN	LICHTSINN, NORMAN W.	ROCKWELL, WILFRED R.
ANDERSON, LAWRENCE	GARNER, GAIL	LINDSTROM, BARBARA	ROPPE, LAURA
ANDERSON, MARK A.	GARTHUS, BARBARA	LLOYD URDAHL	ROZOWSKI, DARCY
ANDERSON, MIKE	GEBUR, LESLIE P.	TESTAMENTARY TRUST	RULLEFSON, ROGER
ANDERSON, MILDRED	GENEREUX, GABE & RONETTE	LOSCHIEDER, LORI	RU-TAN, INC.
ANDERSON, OLGA E.	GILLESPIE FARMS	LOVLY, IRENE	SALENTINY, PATRICK
ANDERSON, STEVE	GILLUND, CODY	LUND, DENNIS D.	SAMPSON, DAVID V.
ANDERSON, W. S.	GRACE BAPTIST CHURCH	LUNDEEN, PATRICIA K.	SANDLAND, ROBERT R.
ARMSTRONG, KELLY	GRANT, ELLIOT & DARLENE	LUNDON, JOY	SBA TOWER, INC.
AWENDER, KEVIN M.	GUNDERSON, VERNA	MAENDEL, JERRY & KATIE	SCHAFER, JOSEPH
BANK OF AMERICAN, FSB	GUZMAN, GILMA	MANDERFELD, RHONDA	SCHINDLER, DALE
BARRETT, JOHN H.	HAGEN, BARBARA	MARQUIS, MITCHELL	SCHMALZ, COLLEEN
BARRETT, ROBERT M.	HALBERG, DORIS	MARTIN, JAMES	SCHMIDT, KAY
BARRY MOHRBACHER, KELLY A.	HAMILTON, PAMELA	MATHSON, LAURIE ANN	SCHMIT, JUDITH M.
BASARGIN, VARS	HANSON, DOUGLAS S.	MCBRIDE, DIANA	SCHULTZ, ORISSA
BATES, A.J.	HARSTAD, DOYLE	MCDONALD, MARK	SCHULZ, JEAN
BERGDAHL, SCOTT D.	HART, KEVIN	MIDWEST TOWER PARTNERS	SEAWARD, JESSICA & MIKE
BERGER, PATRICIA A	HAUGEN, DUANE	MILLER DAIRY FARM	SECOND HAND STORE
BERGGREN, GOSTA "GUS" L	HAUPT, EUNICE	MILLER, LOWELL A.	SHEFLAND FLYING SERVICE
BLAIR, TAMMY	HAYES, JAMES	MOLSKNESS, BONNIE M.	SHEIK, RICHARD
BOHACH, DEBRA J.	HEBERT, DARCY	MORENO, MELISSA	SHERETTE, NANCY L.
BORDERS, MICHAEL S	HEGGE, LOREN	MORIN, ROSE	SHOGREN, MARY LOU
BOWMAN, DAVID	HENDERSON, DONNA & CHARLES	MURRAY, JOHN M.	SIDERS, MONTY R.
BRENNAN, SHELLY	HICKS, JAY M.	NEISEN, DEREK	SIMAN, LEORA
BRIERLY, JUSTIN	HILLTON HOG FARM	NELSON, HOLLY R.	SKJERPING, WILLIS E.
BRISTOW, CAL & SHIRLEY	HINCE, CRAIG	NELSON, SARAH J	SLININGER, SHIRLEY A.
BUCKTA, JEREMY	HINCE, RONALD J.	NEUFOLDEN MILL WORKS	SMITH, PAULA
BURRACK, MARGARET LULL	HJELLE, HILTON	NOBLE, LUKE & AMBER	SOARES, ED & DOROTHY
BUTLER, EARL & JENNIFER	HOLEN, MICHAEL L.	NOMELAND JOHNSON, TERRA	SPANGLER, BRAD
CARTER, CYNTHIA	HOLMSTROM, IRENE	NOREEN, JANICE	SPARBY, RUSS
CASAVAN, JENNIFER	HUD/FIRST PRESTON	NOREKIS, DAN	SPAULDING, MICHAEL
CASAVAN, MARGARET	HUOT, ROY	NOVAK, SCOTT & H	SPONG, LARRY
CHERNUGAL, RICHARD	INTERSTATE BRANDS	HELGENSET	STEINHOFF, BRAD E.
CLARK, SUSIE E	IVERSON, JERALD	NOWACKI, RANDY & JULIE	STEPHENSON, LILA
CLINTON, KIM	IVERSON, KEVIN	ODE, YVONNE	STIEPP, BECKY J.
CLOUD, LAWRENCE G.	JANSSEN, JUSTIN	OLSON, EMMA C.	STIGEN, RITA J.
CONDOR, LINDA & S JACOBS	JOHNSON, JEREMY E.	OLSON, KARI	SWANSON, JENNIFER E
CONDOR-MOSER, FRED & LINDA	JONES, ALRAY	OLSON, LISA M	SWANSON, JOEL A.
CULLEN, WALTER J.	JORDAN, JENNIFER & BECKY	OLSON, TRACY	SWANSON, WELDON "SWEDE"
DAHLLIN, DEBRA	JR CONSTRUCTION	OSTBY, AARON & DIRK HAUPT	SWANSON, WESLEY C
DANIELSON, TODD	JUDD, GEORGE D. JR.	PAULSON, RICHARD	SWENSON, JEANNIE
DEMMEYER, DELOIS	KAINZ, DELORES	PEDERSON, ALDER L.	SWICK, MYRTLE LOVENA
DOEMEL, VIONA	KAISER, AARON F.	PEDERSON, MARY	THORPE, SHAWNA
DUMMER, RICHARD L.	KALBAKDALEN, HELMER	PEPSI AMERICA	TIMM, SHANE
DUNLEVY INC	KEZAR, CARL G.	PERFECTO, ANTHONY A.	TUCKER, KEN
DURHEIM, MONA R.	KINSMAN, JOHN P.	PERFECTO, DAVID	UNITED MORTGAGE CORP
DYBEDAHL, JASON L.	KISCH, CULVER	PETERSEN, TIM & CHERYL	VAN ACKEREN, CINDIE
ECKERT, MIKE	KLEMA, JOHN	PETERSON, MARK	VAN CAMP, JEFFREY T.
ENGVAL, JIM	KOENIG, TIMOTHY M.	PETERSON, MARK	VANDESTREEK TRUCKING
ERICKSON, GEORGE	KORPI, CHRISTINE	PETERSON, MICHAEL & KATHY	VEZINA, LOIS
ESKELL, AMELIA	KOSTRZEWSKI, DEWAYNE	PHILIPS, JIM F.	VOGT, ROBERT W.
EVENSON, MARY ANN	KOUKARI, RAYMOND M. JR.	PIETRUSZEWSKI, CHAD E.	VONDAL, RONALD F.
FALDET, ALVINA	KRANZ, GREGORY M.	POPPENHAGEN, EARL M.	WALSH, PATRICK & JANYA
FICK, JASON	KRUEGER, KURT F.	PRESIDENT HOMES, INC	WATSON, CATHERINE L.
FINKE, GARY	LANCOT, SARALEE	PRICHARD, NANCY	WEGGE, DEAN
FLAHERTY, KEVIN & DOROTHY	LANDRUS, BECKY	PRICHARD, TRACY	WILLIAMSON, LELAND E.
FOGARTY, SCOTT	LANG, BRENDA	RADERMACHER, RICHARD J.	WISETH, BRADY
FORSBERG, CAROL J.	LARSON, LOREN	RANCH INC., MENTOR	WOOD, ROBERT
FOSS, JODI L. (SATHER)	LARSON, NATHAN E.	REDEAGLE, BEN	YOUNG, MARY ANN
FOSTER, MICHAEL	LAWRENCE, JIM F.	REED, LONNIE	
FRANK, WANDA M.	LEACH, STANLEY	RINGLING, DONALD	





## Cards of Thanks

Thank you for the Red Lake Electric scholarship I was awarded. I really appreciate it and will use it toward pursuing my college education.

*Maria Olson, Crookston High School*

Thank you for your scholarship. It is greatly appreciated and will be going toward furthering my education at MSUM. This scholarship will help pay my tuition.

*Sydney Gunderson, Red Lake County Central High School*

I would like to thank you for the scholarship. I will be making sure I put it to good use in the upcoming years. With the help of this scholarship, I will move closer to my goal of furthering my education with the bare minimum of debt.

*Jakob Hall*

Thank you for the opportunity to receive the generous scholarship through Red Lake Electric Cooperative. I plan to use the money to defray the cost of my tuition when I attend North Dakota State College of Science of Culinary Arts.

*Allison Larson, Crookston High School*

Thank you for helping me achieve my education goals. Receiving this scholarship will help reduce my financial burdens and aid as I continue my education. Upon completion of my degree (double major in physics and mechanical engineering), I will pursue a career in an innovative game-change company.

*Travis Barth, Lincoln High School*

I am honored to be a recipient of the Red Lake Electric scholarship. Each bit goes a long way and I'm so deeply grateful. I am looking forward to attending Northland Community and Technical College in the fall to finish the last year of my criminal justice degree.

*Gracie Hannon, Lincoln High School*

Thank you so much for the scholarship. I will use this money to help pay my tuition and expenses when I attend MSU – Moorhead in the fall. I am planning to get my masters in speech pathology, and your financial assistance is greatly appreciated.

*Leah Sorvig, Lincoln High School*

Thank you very much for awarding me a Red Lake Electric scholarship. I am very honored with this opportunity! Thank you for your generous support toward my upcoming future. I plan to attend BSU as a freshman. I hope to major in (29124 William C. Reynolds) construction management and graduate with my bachelor's degree of science.

*Torie Bugge, Lincoln High School*

I would like to thank you for the Red Lake Electric scholarship! I have officially been accepted into Northland Community and Technical College and will start my nursing journey this summer. I hope to graduate with my RN (registered nursing) degree, and eventually specialize in pediatric, obstetrics and/or neonatal care.

*Caitlin Johnson*

### Thank you RLEC Trust

We thank you for your contribution to the Power of Produce Club at the Thief River Falls

Farmers Market. This is a great investment for the youth of our community.

*PoP Club TRF*

A special thank you from the St. Hilaire Fire Department for your continued support. Your gift will be applied to our training needs. We plan to purchase multimedia equipment to further ways to train our firefighters and first responders. Your generosity is greatly appreciated.

*Seth Tveiten Fire Chief, SHFD*

Thank you for your generous grant you gave us to provide entry fee for 3½ to 5-year olds and their parents to the Headwaters Science Center in Bemidji. We had a total of 48 participants from Red Lake County. There was a lot of hands-on learning experiences enjoyed by both young and old.

*Margret Hamrum, RLCC ECFE*

*Plummer site; Wanda Nelson RLF ECFE; Joni*

*Bjerklie RLCC ECFE Oklee site*

*and Head Start*

Thank you so much for your generous grant to North Country Horsemen Trails to Treatments. NCH Trails to Treatment is in its eighth year of granting funds to those who are receiving medical care for cancer and are in the need of financial assistance. Our volunteers are dedicated to the long-term success of this grant program, and as of mid-April 2019 we've issued 780 grants totaling \$415,300. Your generous contribution from Operation Round Up to our program is greatly appreciated.

*NCH Trails to Treatment Committee*

## Tips for a Safe Harvest

Harvest season brings hard work and can be an exhausting, but rushing the job to save time can be extremely dangerous (even deadly!) when working near overhead power lines. We urge farm operators and workers to keep the following safety tips in mind:



Use care when operating large machinery near power lines.



Inspect the height of equipment to determine clearance.



Always keep equipment at least 10 feet away (in all directions) from power lines.



Remember to lower extensions when moving loads.



If a power line is sagging or looks to be dangerously low, please call us immediately.

*Source: Safeelectricity.org*

**YOUR RHYTHM IS STUCK IN 1993.**

**Dump AC for a tech  
tune-up.**

It's time for an  
**AIR-SOURCE  
HEAT PUMP.**

What makes an **ASHP** cooler than **AC**?

- Rad rebates up to **\$500 per ton**
- Slammin' **sustained savings**
- Wicked warmth AND chill cooling for versatile **year-round comfort**

Up to  
**\$500/ton**  
in rebates!



Call member services at 218-253-2168  
or 1-800-245-6068 to start saving today.