

Member meetings Opportunity for information, discussion, fellowship

District meetings for the members of Red Lake Electric Cooperative will be held at three locations within the Cooperative's service territory. Meetings will be held within Districts 1, 4 and 5. The meetings inform attendees on issues and programs associated with the Cooperative. Official business will be conducted at the three district meetings, which will include the election of a director candidate. Even though a meeting may not be scheduled within the district in which you reside, you are welcome to attend a meeting of your choice. Anyone requiring dietary needs, special access or assistance at any one of the meeting sites should call Red Lake Electric in advance so arrangements can be made. Door prizes will be awarded and lunch will be served at each meeting.

2020 Member Meeting Schedule

Day	Date	Time	Meeting	Location
Tuesday	Feb. 4	7 p.m.	District 5	Community Church Thief River Falls
Wednesday	Feb. 5	1:30 p.m.	District 4	Oklee Community Hall Oklee
Thursday	Feb. 6	1:30 p.m.	District 1	St. Peter's Catholic Church Gentilly

		Huntly	Como				
	West Valley	New Maine	Spruce Valley M. River	Cedar	Whiteford		
Foldahl	Marsh Grove District 3	New Folsen	Holt Holt	East Valley District 2	Mud Lake	Eckvold	Valley
	Viking Viking	New Solum	Excel	Agder	Grand Plain	Moylan	Espelle
	Numedal	Norden	North TRF	Silverton District 5	Cloverleaf	Goodridge	Reiner
	Bray District 9	Sanders	Rocksbury District 8	Smiley	Kratka	Highlanding District 7	Star
Belgium	Polk Centre	Black River	River Falls	Wyandotte	Mayfield	Deerpark	Hickory
	Wylie	Browns Creek	River				
Parnell	Louisville	Red Lake FIs RLF	Gervais District 6	Emardville Plummer	Games	Equality District 4	Johnson
Crookston Crookston	Gentilly Gentilly	Lake Pleasant	Terrebonne	Poplar River Brooks	Lambert	Chester	
Fairfax	Kertonville District 1	Tilden	Grove Park Mentor	Badger	Lessor	Hill River	
Russia	Onstad	Red Lake Electric Cooperative, Inc.					

MARK YOUR CALENDARS FOR THE RED LAKE ELECTRIC ANNUAL MEETING Wednesday, March 25

Red Lake Electric Cooperative members are encouraged to mark their calendars for the Cooperative's annual meeting. The meeting will be called at 10:30 a.m. on Wednesday, March 25, at the Ralph Engelstad Arena in Thief River Falls.

Director elections to be held

Red Lake Electric Cooperative members in District 1, 4 and 5 will soon elect directors to represent them. The initial elections will take place at the upcoming district meetings. Final election will occur at the Cooperative's annual meeting March 25 if there is more than one nominee. Districts 1, 4 and 5 are currently represented by Bonnie Christians, Steve Linder and Mark Hanson, respectively. Directors must be members residing in the district they represent and have no conflicts of interest regarding Red Lake Electric Cooperative. Any candidate for director must have his or her name (29545 Tara Weigel) stated as the "member" on the Cooperative's records. For more information on director qualifications and responsibilities contact Stephanie Johnson, general manager, at 800-245-6068 or 218-253-2168.

Red Lake Electric Cooperative Director qualification requirements

No member shall be eligible to become or remain a director who:

- Is not a member of the Cooperative, receiving electric service at the member's primary residence in the district from which the director is elected.
- Within three years preceding a director candidate's nomination was an employee of the Cooperative.
- Is or becomes, or at any time during the three (3) years preceding a director candidate's nomination shall have been employed by a labor union, which represents or has represented, or has endeavored to represent any employees of the Cooperative.
- Is a parent, spouse or cohabitant of any employee of the Cooperative.
- Is a person who is a parent, spouse or cohabitant of an incumbent director who is not up for re-election at that time.
- Is in any way employed by or substantially financially interested in an enterprise competing with the Cooperative or any Cooperative-affiliated business.
- Is or becomes the full-time employee or agent of, or who is or becomes the full-time employer or principal of, another director.

OFFICIAL PUBLICATION OF
Red Lake Electric Cooperative, Inc.
 P.O. Box 430 • 412 International Drive S.W.
 Red Lake Falls, MN 56750-0430
 (USPS 663-400)

Subscription rate: \$2.50 per year

This institution is an equal opportunity provider and employer.

Published 10 times a year, January through May, July and September through December, by Red Lake Electric Cooperative, Inc., in the interest of its members and others. Periodical postage paid at the U.S. Post Office in Red Lake Falls, Minnesota 56750. POSTMASTER, SEND ADDRESS CHANGES to Volts & Jolts, c/o Red Lake Electric Cooperative, Inc., P.O. Box 430, Red Lake Falls, Minnesota 56750-0430. Email: info@redlakeelectric.com.

OFFICERS AND DIRECTORS

President Randy Versdahl
 Vice President Stacy Blawat
 Secretary-Treasurer Mark Hanson
 Directors Cecil Anderson,
 Aaron Chervestad, Bonnie Christians,
 Colette Kujava, Steve Linder, Peter Mosbeck
 Stephanie Johnson General Manager
 Steve Conely Manager of Electric
 System Operations
 Kelli Brateng Manager of Member Services

OFFICE HOURS

Monday-Friday
 8 a.m. – 4:30 p.m.

Phone: (218) 253-2168
 Toll-Free: 1-800-245-6068
 Fax: (218) 253-2630



AFTER HOURS/OUTAGE CALLS 218-253-2200

Website: www.redlakeelectric.com
 Email: info@redlakeelectric.com

CALL BEFORE YOU DIG 1-800-252-1166 or 811

MINNESOTA STATE ELECTRICAL INSPECTORS

Northwest corner of Polk, western Marshall
 and Red Lake Counties:

Wayne Bergstrom – 701-520-9771

Pennington and eastern Marshall Counties:

Ronald Ditsch – 218-779-6758

Most of Polk County:

George Stage – 701-306-3511

Any time you or an electrician does wiring or other electrical work at your home or farm, Minnesota state law requires a state wiring inspector to conduct a proper inspection of the work. A rough-in inspection must be made before any wiring is covered. A final inspection is also required. Please visit www.dli.mn.gov for more information. The inspectors can be reached weekday mornings between 7 a.m. and 8:30 a.m.

OUR MISSION STATEMENT

It is the mission of Red Lake Electric Cooperative to enhance the quality of life for people of our service area by safely and consistently providing quality electric service and other valued services while holding our employees, our community and our environment in high regard.



New year brings new advocacy opportunities

by Stephanie Johnson

When the calendar flips to the new year, many people set priorities for the coming months. Whether it is fitness, health or financial goals, it takes planning and a concerted effort to achieve results. When it comes to delivering electricity, your electric cooperative takes a similar approach. One area of preparation and action that comes into focus each year at this time is Red Lake Electric's legislative advocacy efforts.

Minnesota has a complex electricity system, with more than 170 electric utilities, the third-highest total of any state in the country. The majority of the state's land area and more than one-third of the state's electricity is delivered by not-for-profit, locally controlled utilities, many of which are rural electric cooperatives. With an overall large and diverse coverage area, it's essential for us to be active in the legislative process.

Telling the cooperative story is vital, particularly when it comes to unique challenges our members face. We advocate for flexibility so that electric cooperatives can operate efficiently and continue to provide safe, reliable and affordable electricity. Our time-tested participation has contributed positively to the outcome of the legislative process.

As the 2020 regular session of the Minnesota Legislature convenes on Feb. 11, we resolve to have a seat at the table and advocate for policies that are in the best interests of our members. Government regulation and public policy have a significant impact on the affordability and reliability of electricity. Through our membership in the Minnesota Rural Electric Association, the state's electric cooperatives (25702 Dale Cote) work together and engage with legislators. The power of a unified voice is strong, and we want you to know we're always committed to working on your behalf.

At the statehouse this year, electric cooperative advocacy efforts will focus on numerous key issues, including:

- Working toward changes in the Minnesota Conservation Improvement Pro-

gram that will encourage and incent the adoption of emerging and relevant technologies such as electric vehicles and water heating;

- Maintaining cost-effective policies for load control programs;
- Ensuring cybersecurity initiatives protect consumer data particularly when it comes to our members;
- Protecting members from one-size-fits approaches through mandates instead of incentives; co-ops must maintain their ability to make local decisions that don't impose burdensome costs on members; and
- Balancing the needs for grid reliability, safety and with short- and long-term decisions related to sources of power generation.

All these issues are important to the members of Red Lake Electric and our fundamental commitment to provide you with electricity at the lowest possible cost consistent with sound management.

During the legislative session, Red Lake Electric board of directors and management team will join our state's other electric cooperatives to spend time at the Minnesota Capitol discussing these electric generation, transmission and delivery policy issues with legislators. We'll be on the front lines explaining the cooperative position on recently introduced bills being (30078 Nathaniel S. Muzzy) considered so that legislators understand first-hand how they impact electric rates and reliability for rural co-op members.

If you have questions about a legislative topic, please reach out to me or a member of the cooperative team. Just like our voice matters at the Capitol, your voice matters at your cooperative.

I would like to extend my sincere sympathy to the family and friends of Ronnie Kees. Unfortunately, I did not have the pleasure of working with Ronnie during his long employment with RLEC, but I have heard about his great work ethic and friendships throughout his career. My thoughts and prayers are with you.

Retired Red Lake Electric employee Ronnie Kees dies



Ronnie Kees was hired full time at Red Lake Electric in 1963 where he started as an apprentice lineman. In 1972, he transferred to the Member Services Department. In 1980, Kees accepted new challenges as customer service advisor, a position he held until his retirement in 2000. Most of his responsibilities at that time were dealing with off-peak electric heating and energy use assistance. Kees coordinated the installation of members' off-peak electric heating systems with contractors and implemented load management controls on those systems.

Throughout his career at Red Lake Electric, Ronnie built a strong trusting relationship with the electricians and HVAC contractors throughout the Co-op's service territory. When Ronnie retired, one electrician stated, "The cooperative is losing a walking file cabinet of the Co-op's electric heating customers and heating systems."

Ronald (Ronnie) Henry Kees was born May 30, 1943, or how he liked to say it, "the fifth month, the 30th day of 43" to Lawrence and Philomena (Hoefer) Kees.

The oldest of seven children, Ronnie was baptized and confirmed at St. Joseph Catholic Church in Red Lake Falls, Minn. He attended and graduated from Lafayette High School in 1961. He married Emma Gervais on Oct. 9, 1965. The couple originally made their home within the city of Red Lake Falls, eventually moving to Ronnie's cherished farm in 1972. Ronnie worked at Red Lake Electric for 40 years, first as a lineman, then in the appliance department, and later in member services. Ronnie's true passion was farming, but he transitioned from that to devote his time to watching his children grow.

Ronnie retired from Red Lake Electric in 2000 and thoroughly enjoyed his retirement years. Ronnie's family and friends were very important to him. He faithfully attended sporting and school events of his children and grandchildren. He loved to hunt, fish, play cards, work in his garden and spend time on projects in his shop, building many keepsakes for family and friends.

Ronnie and Emma spent many memorable years with family and friends, both old and new, at Rocky Point on Lake of The Woods. He enjoyed life, which was evident in his mischievous smile. He enjoyed Saturday and Sunday family "Happy Hour" on the deck. He will be greatly missed by everyone who knew him.

Ronnie is survived by his wife, Emma; son Daniel (Denelle) Kees of Red Lake Falls, Minn.; daughters Jackie Kees of Red Lake Falls, Brenda (Tim) Froeber of Crookston and Sara (Lon) Pederson of Red Lake Falls; his seven favorite grandchildren: Ashley (Paul) Miller and Eric (Aubree) Kees; Christopher Peterson; Amber and Lucas Froeber; and Rhylee and Kennedy Pederson; two great-grandchildren: Brody and Noah Miller; siblings Carol (Delbert) Audette, Red Lake Falls; Phyllis (Jim) Rutledge, Monroe, Wis.; Diane (Leon) Schmitz, Park River, N.D.; Doug (Carol) Kees, Juda, Wis.; and Sandra (Greg) Knott, Red Lake Falls, Minn.; as well as many nieces and nephews. He was preceded in death by his parents and his youngest brother, Kevin Kees.

Arrangements were with Johnson Funeral Service, Red Lake Falls.

Recipe Corner



Submit your recipes to be published in *Volts & Jolts*. Email to info@redlakeelectric.com or mail to: Red Lake Electric Cooperative, PO Box 430, Red Lake Falls, MN 56750.

Sauerkraut, Bratwurst and Potato Soup

A creamy, slightly tangy soup full of veggies, potatoes, bratwurst and sauerkraut.

6 cups chicken broth
3 cups kraut juice + water
to make 3 cups
(We LOVE Frank's!!)
3 potatoes, peeled and cubed
2 cups sliced carrots
1 small onion, diced
4-5 stalks celery, diced
1 stick butter
½ cup flour
1½ cups milk
2 cups cream
2 cups sauerkraut, drained –
Frank's is the BEST!
5 bratwursts, casing removed

Drain sauerkraut, reserving juice. Add water to kraut juice to make 3 cups. In a large soup pot, bring chicken broth and kraut/water to a boil. Add potatoes and carrots, cover and cook until veggies are desired tenderness.

In a skillet, chop and brown bratwurst until it gets nice and brown. Remove from pan, set aside.

Do not clean pan. Add onion and celery to pan, and saute for about 5 minutes. Add sauerkraut, continue browning (21214 Kern Larson) until sauerkraut is cooked well.

Return bratwurst to kraut mixture. Add brat/kraut mixture to broth.

In a small saucepan, melt butter, add flour to melted butter and whisk, making a roux. Slowly add milk and cream to flour mixture. Cook on low, whisking as it thickens.

Pour into broth and let soup simmer on low until heated through.

2010s

Decade in review

The 2010s will go down as one of the most eventful decades in Minnkota history. The cooperative completed some of its largest projects, reached significant milestones and kept pace with rapid industry change.

As the energy landscape continues to evolve, Minnkota exits this decade in excellent position. The cooperative has a dedicated board of directors, a talented and driven workforce and a united membership to navigate the challenges and opportunities ahead. These people have helped drive forward the projects that have positioned Minnkota to provide safe, reliable, affordable and environmentally responsible electricity for many years to come.

Here is a look at 10 things that helped define the 2010s for Minnkota.

Editor's note: Minnkota Power Cooperative, based in Grand Forks, is Red Lake Electric's wholesale power provider.

Safety success

Minnkota continued to promote a culture of safety through active awareness programs and consistent hands-on training for all employees. By almost all measures, the cooperative met its goal during the decade to be an industry leader in all aspects of safety and to operate its power plants, transmission lines, substations and other equipment in the safest manner possible.

The workforce reached 1 million work hours without a lost-time injury at both the Grand Forks headquarters (2016) and the Milton R. Young Station (2019 and counting). It is believed to be the first time that these milestones have been reached by Minnkota personnel.

Initiatives aid with workforce transition

Minnkota began the decade faced with a major workforce transition. Nearly 60% of the cooperative's employees were age 50 or older in 2010. Today, about half of the workforce consists of millennials. In preparation for this change, Minnkota implemented major work process initiatives with its power production and power delivery personnel.



The Reliability Excellence (Rx) initiative was implemented at the Young Station in 2012 to help support continuous improvement in the areas of safety, environmental

compliance, cost control and employee knowledge transfer. Power delivery personnel launched the P5 initiative in 2016 to improve transparency, capture

institutional knowledge and promote the continuous improvement of work processes. The initiatives have helped move Minnkota from a reactive state to a proactive state – as evidenced by third-party audits conducted before and after implementation of the initiatives.

Environmental upgrades completed at the Young Station

In 2011, Minnkota completed a five-year, \$425 million upgrade at the Young Station – the most significant improvements in the plant's history. Both generating units were equipped with technologies to reduce emissions of sulfur dioxide (SO₂), nitrogen oxides (NO_x) and mercury. The upgrade also included a complete overhaul of the plant's electrical support systems and related infrastructure.

Throughout the rest of the decade, plant staff worked to optimize the emission control equipment and reduce operating costs. The investment in the Young Station continues to produce positive results. The facility meets or exceeds all current air quality standards and remains a reliable and economical resource to meet the membership's energy needs.



The Young Station has completed several upgrades to significantly lower the level of emissions from the plant.

Center to Grand Forks line project completed

In 2014, Minnkota completed the largest power delivery project in its history.

The 250-mile, \$354 million Center to Grand Forks transmission line was energized after more than two years of construction. Crews moved prudently across the line's route from the Young Station to Grand Forks installing concrete foundations and erecting

125-foot-tall steel structures, taking only about 10 acres of agricultural land out of production in the process. After each pole was constructed, helicopters helped to string the line, a practice that further minimized the impact on local communities, farmland and the environment.

The completion of this project helps ensure Minnkota (29834 Barbara G. Holthusen) will provide reliable electricity in the region for many years to come.

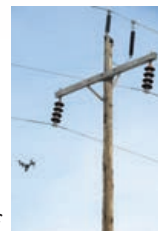
Power delivery projects improve reliability

In the second half of the decade, Minnkota accelerated projects to address aging infrastructure and improve reliability for the membership. The primary focus has been to enhance the performance of the 69-kV subtransmission system.

The majority of this 2,300-mile power line network has aged beyond 50 years of service and was not designed to meet the heightened expectations of



The new Center to Grand Forks transmission line was Minnkota's largest-ever power delivery project, launching a new era for the cooperative.



today's consumers in terms of reliability. More than 1,000 miles of this system has been equipped with technologies that help reduce the impacts of blink outages – those momentary losses of power often caused by a disturbance on transmission line.

Minnkota has also begun formalized programs to rebuild several line sections and distribution substations that were originally built 60-70 years ago. Additionally, crews have implemented advanced communication technology at many of the cooperative's older substation sites – a multiyear project referred to as distribution automation.

The result of these ongoing efforts is improvements in Minnkota's power delivery reliability metrics. Outage time, outages per delivery point and blink outages per delivery point have all been trending downward near the end of the decade.

Security helps drive workforce, infrastructure changes

Physical security and cybersecurity came into the forefront in the 2010s. Minnkota responded by realigning its existing security resources and creating a new employee division whose focus is on managing security, technology and the reliable operation of the electrical system. Throughout the decade, many audits and assessments were conducted to ensure Minnkota stayed ahead of technological changes.

Security was a primary driver in the decision to build a new cooperative campus – Minnkota's first new head-



quarters complex since the 1940s. The 252,000-square-foot facility was completed in December 2017 and helps ensure Minnkota's employees, infrastructure and data are protected from potential threats.

Oliver III adds wind to system

Energy from the Oliver III wind farm began flowing into the Minnkota-Northern Municipal Power Agency (NMPA) system in January 2017.

The 100-megawatt addition to the Oliver Wind Energy Center was developed by NextEra Energy Resources. All

production is sold to Minnkota under a 35-year Purchase Power Agreement (PPA). Minnkota and NextEra have a longstanding and mutually beneficial business partnership that has helped to greatly expand wind generation in North Dakota. In addition to the Oliver III project, Minnkota has PPAs in place with affiliates of NextEra for 357 MW of wind power capacity from the Langdon and Ashtabula Wind Energy Centers on the eastern side of the state.



Young Station reaches performance milestone

After more than four decades of service, the two units at the Young Station combined to have one of their best years ever in 2017. From a production perspective, the Young Station generated 5,330,955 net megawatt-hours (MWh) during the year – the second-highest total ever behind 2008's 5,413,383 MWh. Cumulatively, the units achieved an all-time best availability rating of 95.2%.

Minnkota thrives in polar vortex events

In January 2014 and 2019, the Upper Midwest faced polar vortex events, which brought extremely cold temperatures and skyrocketing demand for electricity.

Faced with some of its most difficult

tests in many years, Minnkota's resources weathered the dangerously frigid conditions and delivered reliable energy to homes and businesses when they needed it most. The integrity of the Upper Midwest's electric grid was maintained thanks in large part to the dependable operation of baseload power plants, the strategic use of demand response and successful coordination between utilities.

Project Tundra gains traction

During the decade, Minnkota began researching and evaluating the installation of technologies that would capture more than 90% of the carbon dioxide (CO₂) emissions (23453 Ryan Kramer) from the Young Station's Unit 2 generator – an initiative referred to as Project Tundra. Once captured, the CO₂ would be permanently stored in a deep geologic formation more than a mile underground.

In 2019, the cooperative received

\$9.8 million from the U.S. Department of Energy, which then provided access to \$15 million from the state of North Dakota's



Lignite Research Fund. The funding will be used to conduct a Front-End Engineering Design (FEED) study – the final step before deciding whether to move forward with construction. If the project moves ahead, construction would commence in 2022-2023.



If completed at the Young Station, Project Tundra could serve as a carbon-capture blueprint for other industries around the country.

Electrical safety and conservation websites

The following is a list of websites that can provide information and education in reference to electrical safety and energy conservation. These websites are listed as links (20872 Deland A Bakke) on Red Lake Electric's website at www.redlakeelectric.com.

- Electrical Safety Foundation International: www.esfi.org
- Alliance to Save Energy: www.ase.org
- U.S. Environmental Protection Agency: www.epa.gov/greenhomes
- Energy Star: www.energystar.gov
- Minnesota Safety Council: www.minnesotasafetycouncil.org
- Safe Electricity: www.safeelectricity.org
- Lighting Controls Association: www.aboutlightingcontrols.org
- U.S. Consumer Product Safety Commission: www.cpsc.gov



NOTICE OF NAMES

Hidden within the text of the articles of this issue of the *Volts & Jolts* are the names and account numbers of some Red Lake Electric Cooperative members. They will appear within the articles in parentheses as such (9999999.99 Willie Ray Member). If you find your name and account number, clip it out and send it with your next payment. You will be credited with \$5 on your electric bill.



Are you using your fireplace efficiently? Remember to turn down the thermostat when burning a fire, and close the damper when a fire is not burning.

Source: energy.gov



Like us on Facebook at
www.facebook.com/redlakeelectric

NOTICE TO MEMBERS

The Red Lake Electric Cooperative, Inc., of Red Lake Falls, as an operating electric utility in the state of Minnesota, is obligated to interconnect with and purchase electricity from co-generators and small power producers.

The cooperative will provide information relating to the said interconnections to all interested member-consumers of the cooperative free of charge upon request.

Any disputes between the cooperative and its member-consumers over interconnection, sales and purchases are subject to resolution by the Red Lake Electric Board of Directors.

FEDERAL/STATE ENERGY ASSISTANCE

If you need help paying your electric utility bill, you may qualify for state or federal fuel assistance. For complete, qualification and application information, contact your local county welfare or community/citizen's action council listed below. These organizations may also provide budget counseling.

Inter-County Community Council

Oklee, MN
Serves East Polk, Pennington and Red Lake Counties
218-796-5144
Toll-free: 1-888-778-4008
Fax: 218-796-5175

Northwest Community Action

Badger, MN
Serves East Marshall County
218-528-3258
Toll-free: 1-800-568-5329
Fax: 218-528-3259

Tri-Valley Opportunity Council

Crookston, MN
Serves West Polk, West Marshall County
218-281-9080
Toll-free: 1-866-264-3729
Fax: 218-281-0705

Red Lake Community Action Agency

Red Lake, MN
Serves Beltrami County
218-679-1880

ELECTRIC HEAT EXEMPTION

This is to certify that the primary source of heat for my residence is electricity and I am eligible for the electric heating sales tax exemption as provided by Minnesota state law. The primary source is the source that supplies more heat than any other source for the largest period of time during the heating season.

Date _____ Account Number _____

Social Security Number _____

Signature _____



The PERFECT POWER PICK for your home

You're newlyweds building a new house
– choose an air-source heat pump.

Whether you've been married three weeks or 30 years, build your new love nest with the flexibility, efficiency and ease of an air-source heat pump system.



AIR-SOURCE HEAT PUMP

- Sized to meet the heating and cooling needs of any home
- Moves heat instead of generating it like a less efficient fuel furnace
- Keeps air fresh and dehumidified
- Easily installed with minimal maintenance
- Qualifies for super-low off-peak electricity rate

Contact the energy experts at Red Lake Electric to find the perfect power pick for your space.

218-253-2168 or 1-800-245-6068
www.redlakeelectric.com

Up to
\$500/ton
in rebates!

STATEMENT OF NONDISCRIMINATION

Red Lake Electric Cooperative, Inc. is an equal opportunity provider and employer. If you wish to file a Civil Rights program complaint of discrimination, complete the USDA Program Discrimination Form, found online at http://www.ascr.usda.gov/complaint_filing_cust.html or at any USDA office, or call (866) 632-9992 to request the form. You may also write a letter containing all of the information requested in the form. Send your completed complaint form or letter to us by mail at U.S. Department of Agriculture, Director, Office of Adjudication, 1400 Independence Avenue, S.W., Washington, D.C. 20250-9410, by fax (202) 690-7442 or email at program.intake@usda.gov.

Director nomination and election procedure

The procedure for which directors can be nominated and elected for Red Lake Electric Cooperative is outlined in Article II, Section 10, of the Cooperative's Bylaws. That section reads as follows:

SECTION 10. NOMINATION AND ELECTION OF DIRECTORS. (a) Nomination at District Meetings. Not less than forty days nor more than sixty days before any meeting at which directors are to be elected, the board of directors shall call a separate meeting of the members of each district from which directors are to be elected, at a suitable place in such district for the purpose of selecting a candidate for director to represent the members located within such district. The notice of such meeting shall be delivered to each member located in such district as provided in Section 2 of this Article and shall indicate the district to which such member belongs. The notice shall state that nominations for a director are to be made at the meeting. The district meeting shall be called to order by the director representing the district or by another designated representative of the board of directors, or in his absence, by any members residing in the district. The members shall then proceed to elect a chairman, who shall be someone other than a director, and who shall appoint a secretary to act for the duration of the meeting. Members of other districts present at the meeting may be heard, but shall have no vote. Nominations for candidates for director shall be made from the floor at the meeting, and any member residing in the district shall have the right to nominate one candidate. The meeting shall remain open for nominations until no further nominations are forthcoming.

Candidates must be members residing in the district and must possess the qualifications for director specified in Section 2 of Article III of these bylaws. Voting shall be by ballot, and proxy voting shall not be permitted at any district meeting. Each member may vote for one candidate. The candidate receiving the highest number of votes shall be declared the official candidate of the district. In case of a tie, the winner shall be determined by the flip of a coin. The minutes of the district meeting shall set forth, among other matter, the name of each person nominated at the meeting and the number of votes received by each and shall specify the official candidate of the district. A certified copy of the minutes signed by the Secretary and the Chairman of the district meeting shall be delivered to the secretary of the Cooperative at the following meeting of the board.

(b) Nomination of Directors by Petition. Nomination for director can also be made by petition. Fifteen (15) or more members may make a nomination in writing to the Secretary over their signatures not less than thirty (30) days prior to the annual meeting. This petition nomination must be in the format prescribed by the Secretary. Blank nomination petitions shall be available to all members at the Cooperative office. All petition nominees shall be listed in the notice of annual meeting, and their names shall be printed on the election ballot.

(c) Election of Directors. At the annual meeting, the Secretary of the Cooperative shall place in nomination the names of the official candidates of each district. Election of directors shall be by printed ballot, separate ballots to be provided for each district, listing the candidates in alphabetical order. Only members of a district shall be entitled to vote for director to be elected from that district, and each member or member's spouse shall be entitled to vote for one candidate from the district in which he is a member. The candidate from each district receiving the highest number of votes at this meeting shall be declared elected as director. In the case of a tie vote, the winner shall be determined by the flip of a coin. Notwithstanding anything contained in this section, failure to comply with any of the provisions of this section shall not affect in any manner whatsoever the validity of any election of directors.

(d) Voting by Mail for Directors. The members shall be entitled to vote by mail for directors at annual and special meetings as provided in this section. Each member shall be mailed a director election ballot in the form prescribed by the Board of Directors with the notice of the annual or special meeting. A member who will be absent from the meeting may vote by mail for directors by marking the ballot for the candidate of the member's choice. The member shall return the ballot personally or by mail to the Cooperative in a sealed plain envelope inside another envelope bearing the member's name. If the ballot of the member is received by the Cooperative on or before the date of the annual or special meeting, the ballot shall be accepted and counted as the vote of the absent member.

Let's keep a good thing going

Red Lake Electric urges members not to plug in electric space heaters during load control times

As members of Red Lake Electric Cooperative know, the load management program is a good thing to have around. The program helps keep electric rates among the lowest in the country.

The program could lose much of its value, however, if electric space heaters – including those being advertised regionally – were to be substituted on a large-scale basis for the backup heating systems that are used during high demand times.

Based on honor system

In the load management program, Red Lake Electric members maintain adequate and reliable dual heating systems. This, in turn, qualifies them for off-peak rates that are nearly 50 percent less than regular retail rates. These systems include electric floor heat, electric furnaces and other loads that can be interrupted during peak-use times.

When the backup systems are in operation, electric load on the regional power system is reduced. This, in turn, allows our power supplier, Minnkota Power Cooperative, to avoid buying (30915 Blake C. Dale) higher-cost supplemental power from the wholesale market.

While there are requirements that have to be met to qualify for participation in the off-peak program, there is a cer-

tain amount of honor involved, too. Members need to allow their backup systems to take over rather than plugging in one or more electric space heaters.

"If members of the associated distribution system violate the spirit of the program, there will be consequences," explains Todd Sailer, Minnkota energy supply manager. "Those consequences would include higher rates for all members and extended control times for those members who are playing by the rules of the load management program."

Major concerns

Recently, ads have appeared in regional newspapers and on the radio promoting certain types of electric space heaters. Red Lake Electric Cooperative is concerned that members might be paying more money for products that aren't going to result in the savings they anticipated.

"No matter how they promote it, a 1,500-watt heater is a 1,500-watt heater," explained Kelli Brateng, member services manager at Red Lake Electric Cooperative. "You can get a space heater at the local hardware store for less than \$50. If someone is buying one of these because of advertisements, they could be spending a lot more money – up to \$400 – for something that might have a fancy cover on it, but in the end,

all they are really getting is a 1,500-watt heater."

Members who plug in space heaters during periods of load control create another concern. The benefits of the load management program are greatly diminished when this occurs.

"Electric space heaters create additional demand during times when Red Lake Electric is trying to demonstrate our ability to control heating loads, which reduces our wholesale power costs from Minnkota," said Brateng.

Safety is also a huge concern with portable space heaters. Using a number of these heaters inside a home can overload circuits that were not wired for that kind of load. The consumer Products Safety Commission reports that each year about 28,000 house fires are attributed to space heaters, resulting in 300 related deaths. Space heaters are not inherently dangerous, but they need to be used wisely.

Dual heating systems – a better solution

"It's not hard to understand why someone who is paying \$2.60 a gallon for fuel oil would think it is a great option to plug in a heater," said Brateng. "But what they may not understand is that over time it will increase their overall costs."

If a number of off-peak members began using one, two

or even three space heaters, this would directly affect their cooperative. This could result in a rate increase for all members, or even worse – the program could be eliminated altogether.

"Instead of the possibility of paying the full rate for electricity for space heaters, members should consider adding to their off-peak systems," Brateng said. "These systems allow Red Lake Electric Cooperative to control heating loads during times when supplemental power from the open market is most expensive."

By either expanding a dual heating system or developing a new one, members will receive the most economical rate available for their electricity, and the integrity of the load management system will be maintained long into the future.

A blend of primary off-peak electric heat with a fuel oil, propane (29715 Kimberlee Davidson) or natural gas backup heating system is less expensive than heating with fossil fuels alone.

"Off-peak electric heating continues to be the most economical heating choice this winter season," Brateng said.

Information about developing a dual heat system is available by contacting the Member Service Department at Red Lake Electric Cooperative. Call 1-800-245-6068 or 253-2168 for more details.